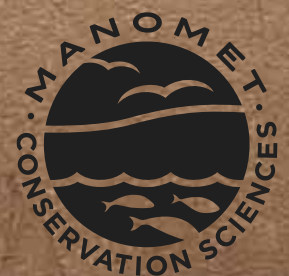


TRACKING CHANGE. INSPIRING ACTION.

MANOMET CONSERVATION SCIENCES ∷ 2024 ∷ ANNUAL REPORT



Manomet is a science-driven conservation organization established more than 50 years ago to track and band birds. Today, we have teams throughout the Western Hemisphere focused on improving the health of flyways and ecosystems challenged by climate change and human activities.

OUR GOALS ARE TO:

- 1 Reverse**
the decline of shorebirds
- 2 Promote**
coastal resilience
- 3 Educate**
and empower the next generation of conservationists



Dear Friends,

We are pleased to present Manomet's 2024 Annual Report. The stories we've included give you a flavor of the intricacies of our work, and the "by the numbers" section underscores both the breadth of our work, and our commitment to measuring its real-world impact.

We rely upon long-formed relationships with trusted organizations to broaden our impact, and each partner we work with is an integral part of the Manomet community. To underpin this collaborative success, we have team members and partners across the Americas.

Our monitoring and tracking of species and habitats provide the latest information for conservationists and other stakeholders from the North Slope of Alaska to the southern tip of South America who rely on these data to make decisions.

We continue to accelerate our gathering of fine-scale geographic and altitudinal data via the application of satellite transmitters on shorebirds. The technology has given us new knowledge of shorebird migration patterns and, in combination with the collective progress we've seen in recovering the American Oystercatcher population, has inspired Manomet to commit to restore shorebird populations for eight additional species representing broader geographies. Our recently announced "No Boundaries" campaign will support this crucial effort.

Our Open Science initiative continues to expand access to Manomet research across the conservation community, deepen existing partnerships, and enable new ones to be formed.

We expanded the Gulf of Maine River Herring Network, an example of what the combination of talented Manomet staff, a commitment to science, and the involvement with local communities can achieve.

Finally, our education work in Massachusetts and across all our programming in the Western Hemisphere highlights our commitment to train the next generation of conservation leaders, with a particular focus on welcoming people who have been underrepresented in ornithology and conservation. The first ever *Training Program for Shorebird Conservation* is a shining example of that commitment.

In this report, we are thrilled to provide examples of the achievements of Manomet and our partners over the past year, accomplishments only made possible with your continued support. We are immensely proud of the hard work of the entire Manomet team, and we thank you for your continued partnership.

A stylized, handwritten signature in dark ink.

Dan Sarles
Board Chair

A handwritten signature in dark ink, appearing to read "Lizzie".

Lizzie Schueler
President

Sustainable Agricultural Practices for Shorebirds

Uruguay's lush native grasslands, known as "Campos Naturales," have long supported the nation's agricultural heritage and rich biodiversity. In eastern Uruguay, scenic brackish lagoons are vital for both livestock grazing and migratory shorebirds. In Manomet's efforts to reverse the decline of threatened shorebirds, we focus conservation efforts on the Buff-breasted Sandpiper, and these grasslands provide critical habitat to an estimated 10% of their population from November through March.

"Buffies" feed on insects like beetles and other arthropods in short grasses. Uruguay's flat, grassy areas resemble the Arctic tundra where they breed but offer a milder climate during the North American winter. Historically, native mammals like capybaras kept the grass short enough for the birds to feed, but overhunting has reduced

their numbers. Additionally, agricultural expansion into soy and forestry plantations has fragmented grasslands, threatening bird populations. Manomet and our partners are working with the agricultural community to address these challenges by promoting sustainable practices that conserve grasslands while supporting productivity.

With our partners Aves Uruguay, Alianza del Pastizal, BirdLife International, Wetlands International, the Eastern Regional University Center, and Fundación Lagunas Costeras, we have carried out research on Buff-breasted Sandpiper migration for more than two decades. More than two decades of research on Buff-breasted Sandpiper migration has been carried out in collaboration with partners such as Aves Uruguay, Alianza del Pastizal, BirdLife International, Wetlands International, the

With this breakthrough management manual, Manomet is helping affect 10% of the wintering population of the Buff-breasted Sandpiper global population (6,000 birds) on 40 ranches.



Eastern Regional University Center, and Fundación Lagunas Costeras. We have applied research findings to test production practices with ranchers leading to co-developed practices that benefit shorebirds and agricultural production.

Active involvement from rural producers has been essential in shaping bird-friendly grazing practices that balance conservation with production needs. Their expertise has informed key strategies, such as maintaining short grass heights throughout the grazing season, leaving taller grass in highland areas as a forage reserve, and limiting agriculture and non-native grasslands to upland areas away from streams. When planting trees for shade or shelter, using native, short-stature species helps

preserve the open landscapes shorebirds need to detect predators. Short grass areas can be maintained by grazing cattle that require less forage, while periodic flooding can naturally regulate grass growth and enhance habitat quality.

By managing water levels in flood-prone areas, protecting key foraging sites, and improving habitat connectivity for migratory species, this collaborative approach has enhanced foraging habitats and fostered a community dedicated to ecological stewardship across 37,000 acres and 40 ranches. This innovative model offers a blueprint for balancing agricultural production with biodiversity conservation, inspiring similar efforts across the Americas.



River Herring: A Network for Impact

River herring are anadromous fish, meaning they migrate from the ocean to freshwater rivers to spawn. In New England, alewife and blueback herring, collectively known as river herring, have provided an important source of food for Wabanaki people for thousands of years, are valued as bait in the lobster fishery, and have been enjoyed as a traditional food for generations. However, river herring populations have declined drastically since the mid-20th century due to habitat loss, pollution, and overfishing, and are particularly vulnerable to climate change.

Despite river herring's importance for people and wildlife, efforts to understand their declines, monitor their populations, and support stewardship practices to increase their numbers were scattered across many groups and lacked a cohesive approach.

To better understand these dynamics in order to bolster river herring success, Manomet Conservation Sciences and Maine Center for Coastal Fisheries formed the Gulf of Maine River Herring Network. The Network is a diverse group of over 125 harvesters, fisheries managers (federal, state, and tribal), community organizers, and educators that have committed to advancing research and co-management of river herring. The primary goals of the Network are to enhance fish passage and restore critical habitats in the river systems. A key benefit to this Network is in aligning and standardizing science practices to ensure robust information-gathering. Community science is a central part of network activities, where members follow a set of standard protocols to collect temperature, zooplankton,

and juvenile river herring data to answer community and management questions about migration and population dynamics.

The Network hosts regular meetings where participants learn about research and restoration updates, share observations from local runs, ask questions of federal and state managers, and swap ideas about monitoring methods. In 2024, we launched an online data platform to gather and share information on river herring and shad (another anadromous species) returns to freshwater habitat each year. The impact is significant: 62 community scientists contributed nearly 400 hours of volunteer time to gather data that is now being used to inform fisheries and habitat management. Building on collaborative efforts to collect data and restore fish passage, five new towns were approved for a commercial river herring fishery in Maine in 2025. By building trust, fostering communication, and empowering communities, the Gulf of Maine River Herring Network offers a hopeful model for how collective action can bridge science, tradition, and conservation to create beneficial results for herring populations and communities.

Sixty-two community scientists contributed 449 hours of volunteer time to gather data that is now being used to inform fisheries and habitat management.

Shorebird Conservation Takes Flight in Louisiana

Louisiana's wetlands provide vital habitat for over half a million migratory shorebirds each year, offering essential rest and feeding sites for species like the Lesser Yellowlegs, Buff-Breasted Sandpiper, and Stilt Sandpiper. Feeding on invertebrates in these wetlands fuels their 9,000-mile journey from South America to the Arctic each spring.

In partnership with the Louisiana Department of Wildlife and Fisheries and the U.S. Department of Agriculture's Natural Resource Conservation Service, Manomet is working with local producers to manage their agricultural fields in ways that will also benefit shorebirds. Through innovative incentive programs, over 50,000 acres of rice fields, crawfish farms, and working wetlands now support shorebirds while offering financial benefits to farmers. By restoring and enhancing these stopover sites, we work toward reversing shorebird population declines by increasing the availability of high-quality foraging and resting habitats—key factors in improving shorebird survival rates during migration.



This work in Louisiana is part of a much larger effort across the Western Hemisphere. Manomet has helped guide habitat management on over 741,316 acres by integrating conservation practices and advancing sustainable land use with agricultural producers in multiple regions. Targeting on-the-ground strategies includes addressing threats like pesticide contamination and adjusting water levels and food availability on the agricultural landscapes. Manomet also provides training for people who manage public lands like national wildlife refuges, and works directly with farms where willing producers implement shorebird-friendly practices, and help inspire broader adoption of conservation measures among their peers.

Additionally, through the creation of the Louisiana Shorebird Alliance, Manomet has brought together over 30 partners—including researchers, nonprofits, and state and federal agencies—to advance statewide shorebird conservation goals. The alliance focuses on protecting high-quality habitat that supports seasonal shorebird migration while also sharing successful strategies with regional partners in Texas and Mississippi. This effort has exceeded expectations, with more than 100 producers across 13 parishes (Louisiana's version of counties) implementing shorebird-friendly practices. By integrating science, partnerships, and on-the-ground action, Manomet is ensuring Louisiana's wetlands and working lands remain critical stopover sites for migratory shorebirds. This collaborative work offers a replicable model for large-scale habitat conservation on which shorebird survival depends.



Empowering Conservation: Building Capacity for Shorebird Protection in the Americas



With nearly 40% of migratory shorebird populations in decline, Manomet Conservation Sciences is at the forefront of efforts to scale up shorebird conservation and cultivate the next generation of conservation leaders across the Americas. By combining innovative training programs and targeted grants to young researchers, Manomet is building the capacity needed to ensure a sustainable future for shorebirds and their habitats.

In March 2023, the Executive Office of the Western Hemisphere Shorebird Reserve Network (WHSRN), which is hosted by Manomet, launched its first Introductory Training Program for Shorebird Conservation, focused on the Pacific Americas Flyway. This six-week virtual course brought together over

200 participants from 11 countries, representing a diverse range of ages, cultures, and expertise. Participants explored topics such as community engagement, good governance, species monitoring, and environmental impact assessments, guided by 20 experts from 12 partner organizations. The program highlighted the power of knowledge-sharing and collaboration in addressing the complex challenges of conserving migratory species across local, national and hemispheric scales.

While the training program equipped stakeholders with the tools to take action, Manomet's Small Grants for Conservation of Neotropical Shorebirds provided early-career conservationists with the resources to do so. This past year, nine outstanding individuals

Equipped with Manomet Small Grant seed money, early-career professionals are working to understand shorebird requirements, protect key habitats, and promote actions to mitigate threats faced by shorebirds in Latin America and the Caribbean.



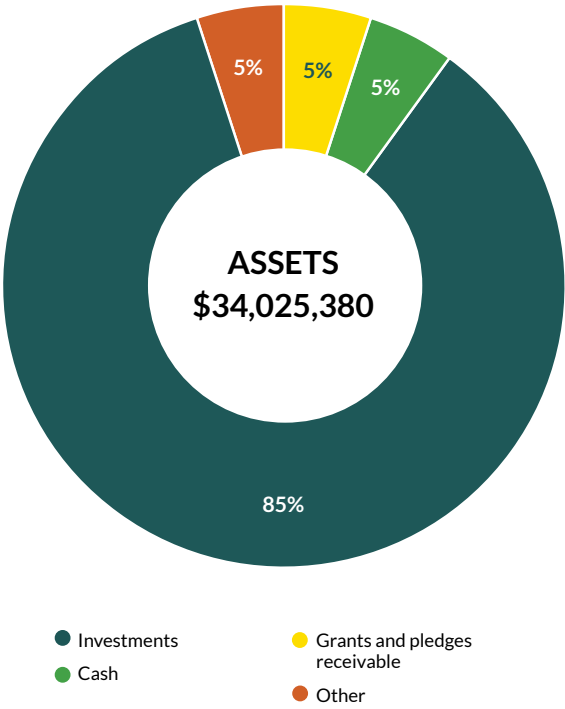
from across Latin America and the Caribbean were selected to lead research tackling critical conservation issues. From reproductive success of shorebirds on Venezuela's Margarita Island to the causes of reproductive failure in American Oystercatchers in the Mataquito-Huenschullami Wetlands in Chile, these research questions will lead directly to improving conservation outcomes for shorebirds.

Our dual-pronged approach — training emerging leaders and funding impactful research — creates a ripple effect, amplifying conservation efforts throughout the Americas. By empowering local communities, engaging early-career professionals, and fostering international collaboration, Manomet is not only addressing immediate threats to shorebirds, but also building a robust foundation for long-term conservation success.

As participants of the training programs and grant recipients inspire change in their regions, Manomet's work underscores a universal truth: conservation thrives when knowledge, passion, and collaboration come together. The future of shorebird conservation depends on these collective efforts to protect migratory birds and the ecosystems they call home.

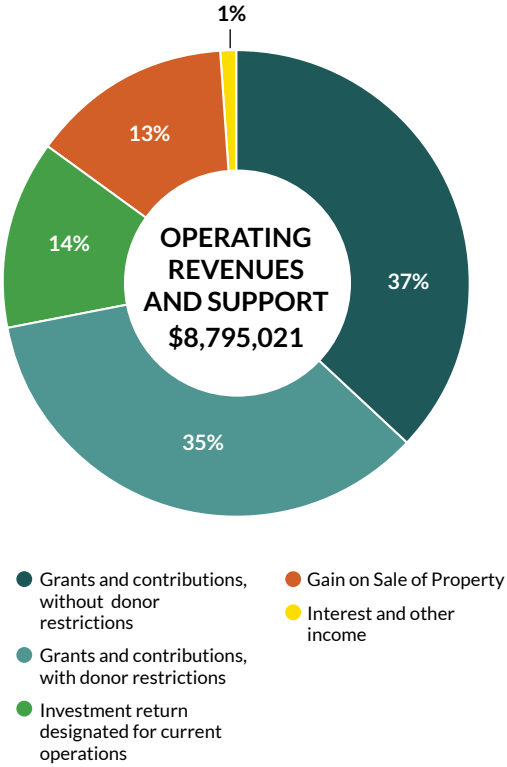
STATEMENT OF FINANCIAL POSITION
September 30, 2024

Assets:	
Cash	\$1,652,162
Grants and pledges receivable	1,544,137
Investments	29,073,837
Prepaid expenses and other	263,796
Property held for sale	-
Property and equipment	1,232,982
Construction in Process	258,466
Total assets	\$34,025,380
Liabilities and Net Assets:	
Current Liabilities:	
Accounts payable and accrued expenses	\$746,147
Conditional grant advances	29,656
Total liabilities	775,803
Net Assets:	
Without donor restrictions	6,356,166
With donor restrictions	26,893,411
Total Net Assets	33,249,577
Total Liabilities and Net Assets	\$34,025,380



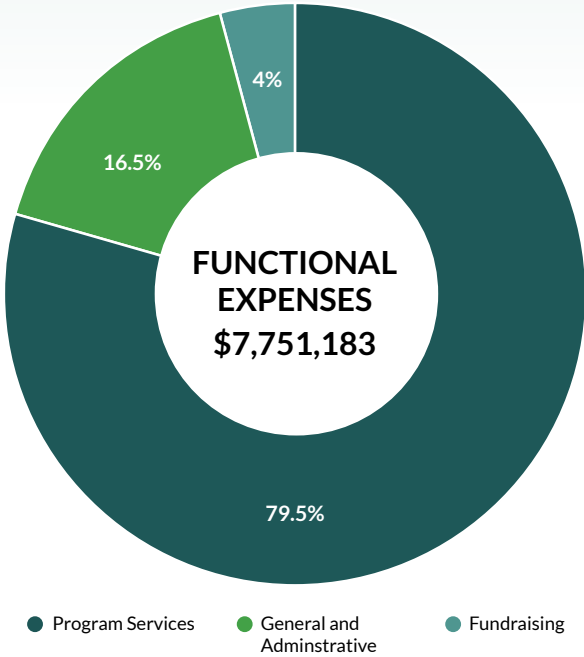
STATEMENT OF ACTIVITIES
For the year ended September 30, 2024

Operating Revenue and Support:	
Grants and contributions, without donor restrictions	\$3,283,393
Grants and contributions, with donor restrictions	3,049,341
Investment return designated for current operations	1,191,997
Gain on sale of property	1,175,526
Interest and other income	94,764
Net assets released from restrictions	-
Total operating revenue and support	8,795,021
Operating Expenses:	
Program services	6,161,450
General and administrative	1,276,023
Fundraising	313,710
Total operating expenses	7,751,183
Change in net assets from operations	1,043,838
Non-Operating Activities:	
Investment return, net	5,852,865
Endowment contributions	15,000
Capital grants	-
Investment return designated for current operations	(1,191,997)
Total non-operating expenses	4,675,868
Change in net assets	5,719,706
Net Assets:	
Beginning of year	27,529,871
End of year	\$33,249,577



STATEMENT OF FUNCTIONAL EXPENSES
For the year ended September 30, 2024

	PROGRAM SERVICES	GENERAL AND ADMINISTRATIVE	FUNDRAISING	TOTAL
Personnel and related expenses:				
Salaries	\$2,498,013	\$509,969	\$246,118	\$3,254,100
Payroll taxes and fringe benefits	593,046	124,852	62,426	780,324
Total personnel and related	3,091,059	634,821	308,544	4,034,424
Non-personnel expenses:				
Professional fees and development	2,190,181	245,430	-	2,435,611
Travel	583,520	1,099	1,350	585,969
Office and other supplies	107,292	209,704	3,816	320,812
Depreciation	54,725	93,181	-	147,906
Bad debt	95,992	-	-	95,992
Equipment	20,499	34,904	-	55,403
Bank charges and fees	-	29,616	-	29,616
Insurance	7,362	12,536	-	19,898
Advertising	-	14,732	-	14,732
Miscellaneous	5,887	-	-	5,887
Facility and related expense	4,055	-	-	4,055
Interest expense	878	-	-	878
Total non-personnel expenses	3,070,391	641,202	5,166	3,716,759
Total expenses:	\$6,161,450	\$1,276,023	\$313,710	\$7,751,183



FY24 BY THE NUMBERS

3.6 Million

Acres of shorebird breeding habitat successfully surveyed for the 2nd year in the Teshekpuk Lake Special Area in the Arctic

30

Agricultural producers in Louisiana enrolled 7,393 acres in a program to establish shorebird friendly management practices — bringing the total to 52,590 acres dedicated to creating vital habitat

20
Teens in Brockton, Massachusetts, joined the Green Team Climate Crew leading hands-on environmental service work to create a greener, more sustainable hometown with partner Wildlands Trust

6
States in which Whimbrel roost counts were completed (GA, SC, MA, LA, TX, VA)

24,000
Acres worth of shorebird surveys were conducted across 7 Texas sites, with nearly 4,000 shorebirds counted

37,312

Acres of shrimp farms improved management practices to serve as shorebird stopover sites in Nicaragua, Honduras, and Mexico

49

Blue crabs tagged in advance of monitoring efforts to track them using underwater acoustic technology

15,000

Oysters planted to create new habitat for forage fish, invertebrates, and shellfish

2,000

Acres of mudflat habitat mapped using drones, local ecological knowledge, and historical imagery

300,000

Quahog seeds planted to conduct growth experiments on two shellfish farms in Maine

1

Manomet scientist (Dr. Stephen Brown) elected as a Fellow to the American Ornithological Society

2,250

Students and visitors participated in classes and site-specific programs at Manomet HQ

2,746

New birds banded at the Trevor Lloyd-Evans Banding Lab at Manomet HQ

55

Nature tour guides earned Coastal Awareness and Responsible Ecotourism Certifications—impacting over 18,800 tourists visiting Georgia, South Carolina, and northern Florida in a campaign designed to protect and reduce disturbance on coastal shorebird habitat

15

Public boat ramps and marinas installed educational signage to raise awareness of sensitive shorebird habitat sites

17

Cattle ranches in Uruguay launched new grazing management practices to increase resilience to climate change and improve shorebird habitat

2

New shorebird surveys undertaken in previously unmonitored locations on the Amazon River and the Interior Pampas in Argentina

6

Sites added to the WHSRN network in Chile, Panama, Brazil, and the U.S., covering 30,875 acres which brings the WHSRN number of sites total to 125 in 25 countries

The work of Manomet Conservation Science’s team in FY24 beyond specific points on a map:

207%

Increase in citations by Manomet scientists in Research Gate since the start of our Open Science initiative

6,308

Surveys conducted by International Shorebird Survey (ISS) volunteers from 1,597 sites in 21 Countries across the Western Hemisphere

50th

Anniversary of the International Shorebird Survey (ISS), Ontario Shorebird Survey, and the Atlantic Canada Survey —a vast community science effort launched by Manomet’s Brian Harrington and Guy Morrison of the Canadian Wildlife Service

35th

Anniversary of the Western Hemisphere Shorebird Reserve Network (WHSRN) in Suriname with the inclusion of Bigi Pan MUMA, Coppename Monding Nature Reserve, and Wia Wia Nature Reserve, which marked WHSRN’s first expansion to Latin America

17,896,733

Acres on which Manomet led or supported partners to take conservation action to promote management practices beneficial for shorebird breeding, nesting, and refueling

1,713

People from across the Western Hemisphere who joined or watched Manomet’s Small Sit virtual monthly webinar series

MANOMET FIRSTS...

1 ...Aerial survey of Cape Cod, Massachusetts, completed for both shorebirds and spawning horseshoe crabs as pilot to monitoring spring abundance for both species.

2 ...Launch of inaugural Monitoring Avian Productivity and Survivorship (MAPS) Program in Myles Standish State Park in Plymouth, Massachusetts: 156 breeding birds were banded, as part of a continent-wide collective effort to assist the conservation of birds and their habitats through standardized bird monitoring.

3 ...Historical shellfish management and conservation database was built spanning 120 years (1860-1980) to monitor and evaluate past trends and future strategies in Maine.

4 ...Range-wide population survey of the reclusive Diademed Sandpiper-Plovers by 80 volunteers in Argentina, Bolivia, Chile, and Peru in peatlands and bogs of the altiplano. A total of approximately 500 sites with potential habitat were surveyed.

5 ...In-person exchange facilitated for 20 students and educators between saline lake habitats Mar Chiquita (Argentina) and Mono Lake (U.S.) to address environmental challenges facing shorebirds in both sites.



FIELD NOTES

Across the Western Hemisphere, Manomet's field scientists are on the ground, monitoring shorebird populations, measuring habitat conditions, and collecting vital data to inform conservation strategies. Here's a glimpse into our work this past year—from remote Arctic breeding grounds to South American wetlands—where science and dedication come together.



Our Supporters

We express our gratitude to the individuals, private foundations, and government agencies whose generous contributions provided critical support for our mission between October 1, 2023, and September 30, 2024. This supporters report was prepared with great care; however, if errors have occurred, please contact Justin Barrett, Director of Development, at jbarrett@manomet.org.

Anonymous (70)	Elizabeth Barlow	Bonfire	Margaret Cain
Bill Abbott	Justin & Jess Barrett	Peter & Elaine Bono	Michael Cain
Sydney Abramovich	Liz Barrett	The Boston Foundation	Cape Cod Bird Club
Barbara Addelson	Robert & Lynn Barrett	Boston Trust Walden	Alastair Caperton
Dr. Beverly A. Agler	Jan Barris	Tricia Williamson & Matthew Botieri	Kristin Cappella
Susan Akers & Ralph Hamill	Elizabeth Bartle & David Boghossian	Tricia Boulet	Megan Cappella
John Allen	Barbara & Bill Bartlett	Jill Boyer	Nick Cappella
Bill Allen	Baskahegan Company	Jeannette Bragger	Sheila Cappella
Janet Allison	Ann Bassi	Cricket & John Braun	Judd Carlisle
Emmy Allison	Marcia & Al Baum	Ann Brayton	Kris & Chuck Carlson
Allen & Karin Altman	John & Molly Beard	Beth Brazil-Hauck	Ian Carnathan
American Endowment Foundation	Skip & Anne Bedser	James Brennan	Sarah Carothers & Duncan Todd
Martha & Rolf Andersen	Tyler Bedwell	Ben & Pandy Brewster	Delia & Thomas Carozza
Dana Anderson	Rein & Nancy Beeuwkes	Hannah Brewster	Janet Carr
Gabrielle Arellano	Claudette & Jonathan Beit-Aharon	LeBaron & Aileen Briggs	Casco Bay Estuary Partnership
Arthur Ashley Williams Foundation	Diane Belden	Margaret Briggs	Lindsay Cavanagh
Richard Asadoorian, Esq.	Carrie Bell	Peter Briggs	Ellen Cerasuolo
Margery Atherton	Elizabeth Bello	Nick Brokaw, Ph.D.	Sue & Wendell Chamberlain
Tash Atkins & Scott Wing	The Benevity Community Impact Fund	The Bromley Charitable Trust	Samuel & Caroline Chapin
Frederick Atwood	Mary Bente	Brookline Bird Club	Regan Charie
Audubon Society of Rhode Island	Charles Berolzheimer	Amy Brown	Charles Stanhope Adams Nature Research Foundation
Sally & Dick Avery	Jim Berry	Brittany Brown	Theodore Chase, Jr.
Penny Axelrod & Jerry Haller	Katherine & Richard Berube	Elveta Brown	Wei Chen
Renee Baade	John Biderman	Jasmine Brown	Derek Cheung
Lora Babb	Charles Sumner Bird Foundation	Joan Brown	Annie Childs
Talbot Baker, Jr.	Birds Georgia	Lily Brown	Toni Chute
Ginny Ballou	Kris Bisgard & Patrick Maurice	Ray Brown	City of Tybee Island
Joann Balzano	Amanda Bittle	Julie Browne	Charlie Clapp
Michelle Balzano	Black Swamp Bird Observatory	David & Nancy Bryan	Claudia & Allen Clark
BAND Foundation	Ellen & Chris Blackston	Miraj Budak	David & Susan Clark
Bank of America Charitable Foundation Matching Gifts Program	William Blakeslee	Lornie David Bullerwell	George Clark
Bank of America Charitable Gift Fund	Arthur Blum	Alice Bunn	Betsyann Duval & Bob Clawson
Mack Barber	Bobolink Foundation	Larry & Pat Burdick	Christina Clayton & Stanley Kolber
Marygrace Barber	Molly & Don Bohm	Charles Burnham, Burnham Foundation	Dawn Clement
	Gail Bolte & Bob Carter	Marcie Byrd	Thomas Clough
		Kathy Cade & Fred Miller	Coastal Heritage Bank

Cindy Cobb	Dell Technologies	Hap & Robin Ellis	Dan Furbish
The Coca-Cola Foundation Matching Gifts Program	Dwight DeMay	Jason Ellis	Jayne Gallimore
Jane Coe	Nancy Dempze & Dan Bailey	Christopher Elphick & Margaret Rubega	Sue Galvin
John Cole & Karen Shernan	Maureen Devine	Ben Emory	Fernando Garcia
Joyce & Les Coleman	Devonshire Foundation	Kathleen Emrich & Robert Sherwood	Larry Gardella
Ursula Collinson	Tony Diamond	Peggy Engel	Garden Club of America
Community Foundation for Greater Atlanta	Dinamo Fund	Environment and Climate Change Canada	Dozier Gardner
The Community Foundation of Santa Cruz County	DOB Ecology	Tyler & Lane Equizi	Mary Gartung
Drs. David & Rebecca Conant	Jean & Bob Dobachesky	Evergreen II Fund	Caroline Gaudet
Louise & Loring Conant	Tom Dolloff	Mady Fagant	Diana Gay*
Dr. Carolyn Connelly	Dominion Foundation Matching Gift Program	Melissa Fahey	Georgia Department of Natural Resources
Diane Conner	Pat Donahue	Andy Falender & Jackie Lenth	Ned Gerber
Liz Cook	Peter Donaldson	Joan Falvey	Trudy Gerlach
Paula Cortes	Judith & Jeff Donn	Lily Faulhaber	Stefanie Giannuzzi
Phil Coupe	Jeanne Donovan Fisher	Shaun Featherstone	Jenn Giardina
Christine Crawford	Doree Taylor Charitable Foundation	Wenley Ferguson & John Wolf	Elizabeth Gibson
Ellen Creveling	Carrie Dortch	Jan Feyler	Peter & Holly Gifford
Nancy Criscitiello	Dale & Priscilla Doucette	Fidelity Charitable Gift Fund	Jay Gilbert
Marian Cross	Sulva Dow	Fiduciary Trust Company	Daniel Gilliland
Tom Crossman	Maria Doyle-Sharkey	Rebecca Finnell	Pete Gilmore
Gary & Jan Crouch	Harold & Jill Draper	Dr. Lawrence Fischman	Give Lively
Sandra Cullison & Jim Annis	Steve & Margaret Drew	John Fiske	Georgia & Thomas Glick
Kendra Cummings	Sheila Droege	FJC	Boynton & Dana Glidden
Owen Cunningham	Ken Dubke	DJ Flam	Richard Gnaedinger
Chris & Robin Cutler	Kevin Duffy	Lorraine & Richard Fleming	Karen Gold
Ismael Da Silva	Kate Dumas	Howard C. Floyd	Leslie Gold
Verna & Craig Dalton	Mandi DuPuy	Madelyn Fogler	Marian Goldeen & Arthur Ogawa
Alex Damato	Camille Duquet	Matthew Foley	Goldenrod Foundation
Thomas D'Aprile	Sandra Durant	Sally Foley	Tim Goldsmith
Desiree Dator	Duxbury Garden Club	Susan & Carl Foley	Arthur Goldstein
Susan Dauria	Eaglemere Foundation	Barbara & Peter Folger	Adena Gonzales
David & Margaret Engel Family Foundation	Eliza & Tim Earle	Joan Forte	Anne Gonzales
Karl David & Elaine Radwanski	Eastern Bank Foundation	Maryanna Foskett	Nadia Gonzalez
Susan Davidson	Frances Green & Peter Ebb	Dana & Bob Fox	Google Matching Gifts Program
Bob Davies	Ebsco Industries, Inc.	Dodie Frank	Cyndi Goss
Joe Davies	Anne L. & Robert G. Eccles	Dr. Marion E. Frank	George Gove
Betsy & Ted Davis	Mary-Louise Eddy and Ruth N. Eddy Foundation	Nancy Frederick	Donald Graham & Carol Barr
Judy Davis	Dennis Edgar	P. Freeborn	Leslie & Phil Graitcer
Harrison DeCotis	Phil & Deborah Edmundson	Brian Freyermuth & Amy Holden	Janet Green
Dan DeGenaro	Edwin F. Gamble Lead Trust	Darlene Friedman	Eva Greger Morse & Christopher Morse
Dr. David S. Deifik	Ethan Einhorn	Fripp Island Audubon Club	Dr. & Mrs. Thomas F. Gregg
Margi & Pompey Delafield	Brooke Eisenhardt	Fugazzi Brothers Tent Rentals	Carol Gregorio
Andrea Delaney	Judi Elkin	Linda Fuller	Paul Gregory
	David & Marion Ellis	Andria Fuquen	Kevin & Laura Groeneweg
			Muriel Gross

Linda Grubb & Kenneth Leonard
Eric Grunebaum & Miriam Tendler
Gale R. Guild
Susan Gunderson
Raghav Gupta
Ann Gurka
Doug & Mary Guyett
Kevin Guzman
Sheila Haak
Paul Hagen
Bill Hahn
Maury Hall
Mark & Joyce Halloran
Ann and Robert Hallowell
Phip & Cindy Hallowell
Sarah Hallowell
Mr. Henry H. Hammond
Nancy Hammond
Peter Hanan
Alicemarie Hand
Drew Harrington
Deb Harrison
Mel & John Harte
Ken Harte
Harvard Law School Library
Gregory Harvey
Ken Harvey
Jim Haselman
Tom & Emily Haslett
Elizabeth Hayes
Griffin Hayes
Jon Hayes
Max Hayes
Julieann Heinrich
Vicki Hepburn
Hermann Foundation
Patricia Hess
Fred Hewett & Cheryl Mazaik
Anna Hewitt
Lucinda Higgins
Patricia Hilpert & John Cloninger
Dr. Lynette Hirschman
Jean Hoffman
Christine Hoffmann
Daniel & Patricia Holland
Sophie Hollingsworth

Hollis Insurance Agency
Holly Holmes
Dr. Richard T. Holmes
Nakeysa Hooglund
Amy Hopkins
Cy Hopkins
Cate Hopkinson
Lucille M. Hornby
Natalie Houghton
Howard W. Maxim Foundation
Corporation
Margaret Howard
Barbara Howell
Penelope Howell-Heller
Tony & Sue Howland
Audrey McCarthy & Dr. John Hoyer
Walter & Judy Hoyt
Shirma Huizenga
Emily & Frank Hunnewell
Next Generation of the Roy A. Hunt Foundation
William C. Hunter
Dick Husk
Joe & Laurie Hutcheson
Amanda Iannuzzi
Deanna Iannuzzi
Pete Jacobson
Ken Janes
Saskia Janes
Carol Jankowski
Mrs. Shirley Jenkins
Mike Jilling
Elaine Johnson
Laura Johnson & Arthur Rogers
Luanne Johnson Ph.D.
Shawna & Sherwood Johnson
Ileana Jones
Jenny Jones
Jonathan Jones
Maren Judd & Larry Banks
Cap Kane
Camille Romano & Mark Kasprzyk
Katahdin Forest Management LLC
Michaela Kayal
Eugene Keferl
Chris Keller

Patricia Kellner
Martha Kelly
Seamus & Marjorie P. Kelly
Pam Boardman & Jon Kelman
Susan J. Kelsey
Marilyn & Richard Kennedy
Jean Keskulla
Jonathan Keyes
Kira Kilstein
Jim Kinch
Pam Kindler
John King
Molly King & Rob Hoyt
Steve King
Warren & Barry King
Paul E. Kinnaly, Jr.
Kelli Kinney
Barbara & Dan Kirby
Sue & Chris Klem
Rob Kluin
Alex Knittel
Knobloch Family Foundation
Lindsay Knowlton
Jean & Dick Knox
Roland Koestner
Sarah Kokoszka
Kathy & Rick Kosinski
Andrea Kreitman
Dr. Stephen Kress
John Kricher & Martha Vaughn
Geoff Kronik
Cynthia Krusell
Donna Kuroda
Andrew & Judy Kusmin
Lucy & Bill LaCasse
Laura Laing
Linda Lancaster
Richard Lanctot
Denise Lang
David Lange
David Lapham & Clark Mitchell
Edward Larson
Doug Lashley
Bonnie Latronica
Lance Laver
Bill & Diane Laws

Joanna Lazarek
Fran Leach
Janice Leary
David & Lucinda Lee
Lynette Leka
Howard Leland
Clare Walker Leslie
Allyson Lewis
Emily Lewis
Stef Lim
Madeleine Linck
Tom Lincoln
Meg Little
Living Observatory
Peter Lloyd-Evans & Anne Leff
Allie & Jim Loehlin
Christine Loizeaux
Sonia Loizeaux
Michelle Lombardi
Margaret Ronsheim & John Long
Judith & Peter Loomis
Walt & Diane Looney
Loring, Wolcott & Coolidge
Gwyneth Loud
Louisiana Department of Wildlife and Fisheries
Jo-Ann & Monty Lovejoy
LPL Financial
John Luft
Lukes Liquors
Trent Lupo
Patricia Lynch
Marcia & Jim Lyons
Lisa Maciejowski
Adelaide MacMurray-Cooper & David Cooper
Carl Madeo
Jim & Sarah Ann Mahoney
The Maine Community Foundation
Maine Outdoor Heritage Fund
Maura Maloney
Susan Malspeis
Donald Manchester, Jr.
April Manganiello & Derek Brown
Frank Mantlik
March Conservation Fund

Mary Jo Marino
Pete & Anne Marra
David & Linda Marsh
John & Carolyn Marsh
Marshall-Reynolds Foundation
Dr. James Martin
Dr. Jack Martinelli
Candy & Andrew Martinez
Nick Masiello
Valerie Maskiell
Mass Audubon Society
Massachusetts Cultural Council
Massachusetts Department of Environmental Protection
Massachusetts Division of Ecological Restoration
Massachusetts Master Gardener Association
Bethany Mateosian
Dan Matlack
Remi Matthews
Dorothy Mayer
Toshia McCabe
Maria McCarthy
Sarah & Dennis McCarty
Pam McCurdy
Jen McDonald
Lanny McDowell
Diana Mcfarlin
Bob & Janice McGann
Jessica McGearry
Suzanne & Neil McGinn
Jenessa McGuire
Marcia McKeague & Chris Austin
Leslie & James McMahan
Barbara McMillan
Anne McNamara-Morin
Timothy McNeill
Eric McNulty
Lisa Meeks
Julianne & David Mehegan
Carolyn Meier
Constance Melahoures
Gabrielle Melchionda
Mennen Environmental Foundation
Josephine Merck

Wilhelm Merck & Nonie Brady
Yvette & Tom Mercurio
Andrew Mergen
Merrill Lynch
Anne Merriman
Patrick Mertens
Barbara W. Meyer
Dr. Thomas Michel & Sara Lewis
Mid-Atlantic Fishery Management Council
Sally Middlebrooks
Wendy Miller
Andrew Milliken
Susan Mimno
Mono Lake Foundation
Montclair Bird Club
Jamie & Jesse Moore
Michelle Morello
Morgan Stanley GIFT
Susanne Lucas
Dick & Sheila Morse
Kathy Mortenson & Ed DeWitt
Ruth I. Morton Fund at the Rochester Area Community Foundation
Steve Motyl
Kathie & Day Mount
Bob Mulvihill
Julia Munoz
James Murphy
Linda Murphy
Victoria Murphy
Virginia M. Murray
Lamisa Musarat
Pamela Mutty
Barbara Nah
Amy Naimi
Jenessa Nappi
Melinda Nasardinov
Mark Nathan
National Fish and Wildlife Foundation
National Oceanic and Atmospheric Administration
National Philanthropic Trust
National Sea Grant
Lindsay Neagle

John Neill
New York Community Trust
Ann Nichols
Phil Nicholson
Tyler Nicholson
Josh & Katie Nickerson
Bronda Niese
Blair Nikula
Ben & Anne Niles
Dr. Ian C.T. Nisbet
Mr. Michael C. Noland
Ellen Nordquist
Cindy & Brian Norris
Joanne Norton
Nicole & Peter Nyberg
Thomas L.P. O'Donnell
Juliana Oelkers
Old Colony Planning Council
Chelsie & Sandy Olney
Arne & Merle Olsen-Storvik
One Hundred Miles
Jan Ortiz
Michael Overstreet
The David & Lucile Packard Foundation
Melissa Paly
Brian & Carol Parker
Dr. Leroy Parker
Joan Parsons
Paskamansett Bird Club
Mr. Leonard M. Passano & Ms. Elizabeth A. Howe
Bob & Bunnie Pasternak
John Paulson
Bob Paxton
Geri Payne
PayPal
Linda Pegalis
Steven Pegalis
Marie Pelletier
Penikese Island School
Robert Penner
Elizabeth Perry
Kim Perry
Michael Perry & Chris Wolfe
Joan Person
Mary Person

Wayne Persons
Mark Peters
Bob Petersen
Chris Petersen
Peterson Lacy Charitable Remainder Unitrust
Betsy Peterson
Mary Jane Peterson
Mr. & Mrs. William E. Peterson
Nicole Phillips
Matthew Piatkowski
Joan Pierce
Jackie & Bill Pierson
Stephanie Piña
Micah Pinard
Janelle Pineda
Martha Piper
Harris Pitsikoulis
The Pittsburgh Foundation
Isabella Pizarro
Jon & Andrea Plate
Deb Plume
Bonnie Pohlig
Kurt Pohlman
Russell & Mary Pollard
Pam & Chris Polloni
Alan F. Poole, Ph.D.
Elaine Porter
Dalia & Mark Post
Lois Post
Peter & Kathy Post
Verne & Caroline Powell
PPG
Dorothy & Leighton Price
Prime Buchholz
Carolyn Pruyne
Allan Puplis
Gina Purtell
Jonathan Putnam
Peter & Meghan Quigley
Mr. Dennis Quinn
Emily Rama
Jennifer Ranck
Pat Randall
Jane Randolph
Brian Rapoza
RBC Capital Markets, LLC

Wendy & Robert Reasenber
Margo & Robert Rebar
Katharine Sterling & Ben Reeve
Marlene Reilly
Elise & Joel Relihan
Renaissance Charitable
Foundation
Sally Revoile
Eleanor Rhangos & Dan Bromstad
Sue Ricciardi
Rice Family Charitable
Foundation
Bill & Lynn Rice
Stephen Rice-Blenkhorn
Elaine Zerr Richardson
Quinn Rickert
Nancy Rider
Nancy B. Riegel
Christopher & Leslie Rimmer
Ms. Marjorie W. Rines
Ann Roach
Gordon Robaska
Jennifer Robbins
Jennie Robbins*
Russell Robbins & Valerie
Rosenson
Tom Burger
Paul Roberts
Rochester Area Community
Foundation
Elizabeth Rochow
Rockland Trust Charitable
Foundation
Elizabeth Rodio
Susan Rodio
Yolanda Rodriguez
Jennifer Romano
Caeley Rose
Patricia Rosel
Arlene Rosenberg
Cynthia Rotdo
Linnea Rowse
Adelard A. & Valeda Lea Roy
Foundation
Jake Rubin
Linda Rudnick
Dr. Curtis Runnels
Brian Rusnica

Julie Beer & Steve Rutledge
Tali Rychik
Susan & Jack Rychik
Marsha Salett
Tom Saltonstall & Maggie Bucholt
Kathiuska Sanchez
Eric & Christin Sanders
Stewart Sanders
Kerri Sands
Peter Sanzenbacher
Dan Sarles
Marilyn & Jay Sarles
Tedd Saunders
Alex Savage
Andrea Schechter
Russ Schipper & Ilse Gebhard
Gloria Schlaepfer
Calvin Schnure
Bill & June Schulte
Schwab Charitable
Robin Schweikart
Kenneth Scott
David Scudder
Sea Breeze Foundation
Maine Sea Grant College Program
Hollye Seddon
Joe & Nell Sedransk
Barbara Seith
Liza & Jon Seltzer
Larry & Rossi Selzer
Sensata Technologies, Inc.
Peg & Steve Senturia
Judith Shank
Susan Shapiro
Yashila Sharma
John Sharp
Tim Sharpe & Alison Quin
Brian & Lisa Shaw
Erin Sheehan
Mary W. Sheldon, M.D.
Ruth & Bill Shelley
James Shelton
Mr. & Mrs. Ross E. Sherbrooke
Todd Sherman
Marywinne Sherwood
Kristin & Mark Shields

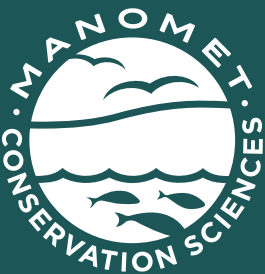
Philip C. Shockman
Randy Siebert
Dr. Steven Siegel
Dan Silver
Drs. Ann and David Simmons
Mickail Simmons
Randi Simons
Ronald Simpkins
Dr. Alice Simpson
Bill Sinnott
Skidaway Audubon
Nicholas A. Skinner
Susan Szepan Slane
Adam Slattery
Bill Sloane
Judy Smith
Mary Alice Smith
Rosemary & Paul Smith
Dr. Susan M. Smith
Wendy Smith
Mildred Solomon
Colleen & Phil Somich
South Shore Bird Club
Southern Maine Conservation
Collaborative
Gigi Spates
Jennifer Speers
Rachael Spelman
Jan Spence
Jeff Spendelow
Nikki Sperry
The Seth Sprague Educational &
Charitable Foundation
Barbara Staab
Chris Staab
Maeve Staab
Ronan Staab
Maegann Stafford
Peter & Mimi Stangel
Gail Starkey
Kathy & Gary Starr
State of Maine
Maura & Thomas Stavovy
Martha Stearns
Dean H. & Katharine C. Steeger
Brooke Stevens & Thomas
McCorkle

Diane Stillman
Austin Stokes
Arnold Strauch
Betsy Strauch
Michael Streeter
Autumn Strom
Bob Stymeist & Martha Steele
Katie Swartz
Edith Sweeney
Jim Sweeney
Sally Swift
Grayson Szczepaniak
The T. Rowe Price Program for
Charitable Giving
Ahlam Taleb
Michael Taubenberger & Kristen
McCormack
Cathy Teves
The Lyme Timber Company
The Nature Conservancy
The Nichols Trust
Louise Thomson
Richard Thomson
TIAA
Marcia Tingley
Sam Tipton, Jr.
Toasted Snow
Heli & Bill Tomford
Nancy Tooke
TOP Jewish Foundation
Andrew & Patty Towle
Town of Plymouth
Beau Toy
Tracy Aviary Conservation
Travis Audubon Society
Stephen Travis
Ryan Treves
Thomas Tringale
Trustees' Garden Club
Linnet Tse & John Forsyth
Lisa & Russ Tuckerman
Amy Tull
Julia Ann Tullis
Eve Turchinetz
Lisa Turgo
Brian Tverskoy
Martha & Dick Twigg

U.S. Department of the Interior
UBS Financial Services, Inc.
Marion & Willard Ulmer
University of Maine
Utah Foundation
Beth Vacchino
Nicole Valencia
Van Liew Trust Company
Mary Van Vleck
Robert VanderMolen
Vanguard Charitable
Rick & Linda Vayo
Tom & Linda Veblen
Sue & Vinnie Veligor
Peggy Vena
Ms. Vanessa Verkade
Diego Villatoro
VML Foundation Fund
Tom & Victoria Vogenberger
George Garretson Wade
Charitable Trust #2
Marcia Wade & David Officer
Valerie Wald
Gail Walder
Gwendolyn Waldorf & Dana
Bryan
Stephen Walker & Diane De Luca
Jeff & Elizabeth Wallace
Pam Ward
Darice & Bob Wareham
Jane Warmack
Julia Warren
Phil & Janet Warren
Giovanna Weber
Edwin S. Webster Foundation
Weeden Foundation
Sandra Weeden
James Weigand
Noah Weiss
Jon Weller
Paul West
Liivia Westervelt
WH Cornerstone Investments
Peter Whan
The William P. Wharton Trust
Tam Wheat
Halsted & Elsie Wheeler

John & Kathryn White
Louise White
Wade White
Jill & Jack Whiting
Betty Widerski
Dick & Allison Wilbur
Ann Wiley
William E. Schrafft & Bertha E.
Schrafft Charitable Trust
Arthur Ashley Williams
Foundation
Dave Williams
Esther Williams
Stephen E. & Anne R. Williams
Tim Williams
Sara Willits
Wilmot Wheeler Foundation
Gretchen Wilson
John Winchester
Tracy Winn & Joe Rigali
Susie Winslow
Katherine Winter
Paul & Maureen Wolter
Andy Wood
Drs. Paul Wood & Pamela Mok
Woodard & Curran Foundation
Ken & Dotty Woodcock
Lauretta Woods
Fred Wookey
Maureen Wookey
Henry & Annie Woolsey
Alan Wyckoff
Roger Wykes
Erik Wyner
Tzu-Wei Yang
Laurie Yntema
Dr. Julia K. Yoshida
W. Mason Young & Beth Gragg
Tom Younkin
YourCause, LLC
Emma Yutzler
Robi & Barry Zallen
Mark & Susan Zankel
Michael Zlotnick
Leslye & Gene Zylkusi

**Deceased*



Widewater Society

The Widewater Society is a group of individuals who have pledged to give Manomet future support through bequests or other deferred gifts. Starting in 2003, it was named after the house on the bluff (Widewater), generously donated by the Ernst family, where Manomet is still headquartered. We are grateful to the following Widewater Society members who have made a bequest or planned gift to Manomet.

Anonymous (2)	Sonia Loizeaux
Beth Brazil-Hauck	Barbara McMillan
Dave Bryan	Eric McNulty
Susan Chamberlain	John Merrill
Antonie Chute	Susan Mimno
Louise & Loring Conant	Arne Olsen-Storvik
Molly Cornell	Leonard “Mac” Passano
Chris & Robin Cutler	Joan Person
Nancy Dempze	Steven Pitcher
Susan Galvin	Sally Revoile
Walter Gamble	Marj Rines
John Hagan	Susan Szepan Slane
R. Tod Highsmith	Martha Stearns
Dexter Hunneman	Dean Steeger
Susan Kelsey	Robert Timberlake
Jeffrey Kramer	Mary Van Vleck
Kathleen & Sanford Leslie	Philip and Janet Warren
Jim & Allie Loehlin	Jacqueline Wilbur
Christine Loizeaux	

If you have already included Manomet in your long-range plans, please let us know. Become a member of the Widewater Society and create your own legacy. Please contact Justin Barrett at 508.434.6345 or jbarrett@manomet.org.

Ways to Give

With your support, Manomet Conservation Sciences and our partners can make an even greater impact.

SCAN HERE:



DONATE ONLINE:

manomet.org/donatetoday

MAIL A CHECK:

Manomet Conservation Sciences
P.O. Box 1770
Manomet, MA 02345
USA

VISIT MANOMET HEADQUARTERS CAMPUS OR ATTEND AN EVENT:

125 Manomet Point Road
Plymouth, MA 02360

We'd love to meet you in person and show you around our 40-acre campus, set on a scenic bluff overlooking Cape Cod Bay. Visit manomet.org/events for a slate of interesting in-person and virtual programs.



Manomet Conservation Sciences has earned a Platinum rating from charity watchdog Candid and a 4-star score from Charity Navigator. These hold the highest standards for evaluating nonprofit organizations and advise supporters like you so that you know that every dollar is making the largest possible impact.

MAKE A WIRE TRANSFER OR STOCK GIFT:

For bank wiring instructions, please contact Justin Barrett, Director of Development, at 508.434.6345 or jbarrett@manomet.org. To give stock or other securities, please visit manomet.org/securities or contact Justin Barrett.

MAKE A PLANNED GIFT

Some of the most meaningful gifts to Manomet Conservation Sciences come in the form of bequests. Estate gifts are good for donors because they allow for full flexibility and access to one's assets as long as needed. For the recipient organization, bequests may help build strategic reserves, enable growth, or fund special projects.

When making a bequest, please use our full legal name: Manomet, Inc.
Federal Tax ID #22-3051362
Manomet, Inc. is an Internal Revenue Code section 501(c)(3) organization incorporated in the State of Massachusetts

For more information, please contact: jbarrett@manomet.org



Partner Spotlight: Tim Keyes

For decades, Manomet and our partners have been at the forefront of shorebird conservation, forging meaningful partnerships to protect these incredible birds and their habitats. Tim Keyes – wildlife biologist with Georgia Department of Natural Resources – is a longtime and valued collaborator.

Tell us about your current role with the Georgia Department of Natural Resources.

I run the coastal bird program for the Georgia DNR's Wildlife Division, specifically focusing on non-game species. My work is based along the coast, where I oversee conservation efforts, outreach, and education for priority bird species. While most of my focus is on the immediate coast, it often extends into the coastal plain. We use a statewide wildlife action plan as our guiding document.



How many priority species do you focus on?

There are about 60 priority bird species listed, though not all of them are coastal. Some of the key species we focus on include wintering sparrows like Nelson's Sparrow and Seaside Sparrow, as well as shorebirds like American Oystercatchers, Wilson's Plovers, Red Knots, and Whimbrels. We also work with nesting seabirds and priority wading birds like Wood Storks and Little Blue Herons. Recently, we conducted a broad survey across the coastal plain and visited 245 sites to monitor wading birds.

How did you first get connected with Manomet?

Growing up, my grandparents lived in Pepperell, Massachusetts, and were very involved in conservation efforts in their town, including helping found the Nashoba Conservation Trust. My grandmother was a fan of Manomet's work, and she got me a signed copy of Brian Harrington's book *The Flight of the Red Knot: A Natural History Account of a Small Bird's Annual Migration from the Arctic Circle to the Tip of South America and Back*. After graduating from college, I joined Manomet's bird banding program and lived and worked at the headquarters for a fall season before starting graduate school. I learned a lot from John Atwood and Trevor Lloyd-Evans, who taught classes on banding, molting, and phenology. It was an amazing experience, and we even got to teach school groups on occasion.

How do you currently partner with Manomet?

Our team works really closely with Manomet. Brad Winn, who used to be Georgia's bird biologist, collaborated with me for years. Abby Sterling now leads Manomet's Georgia Bight program, and I've worked with her for over 15 years, and Allie Hayser has been an amazing contributor to the Georgia team. Manomet has been instrumental in outreach and education

about shorebird conservation, which were areas we struggled with at DNR.

Manomet's team is incredibly approachable, which is crucial. There can be a tension between people wearing an official badge (we at DNR!) and people making a living on the coast. Manomet bridges that gap by building trust and connecting with people in ways we couldn't.

Can you tell us about the Youth Birding Competition you started?

With a few grants, we launched the first competition in 2006 with 60 kids. It's been growing ever since. Now, we typically have 120 to 130 young birders on over 30 teams. It's amazing to see kids get hooked on birding, whether their parents are birders or they're introduced through a teacher or friend. Some of them have even gone on to break state birding records later in life!

Why is it so important to get kids outside?

If kids don't develop an awareness of the natural world, they won't care about its loss. That basic awareness is the foundation for future conservation action. These days, it's harder than ever to get kids off their screens in a meaningful way, but once they connect with nature, it can be life-changing.

What's the best thing about working with Manomet?

The quality of the staff, hands down. I've worked with Manomet folks since the mid-'90s. They're incredibly talented, dedicated, and take on leadership roles in research and conservation. It's always a pleasure to work with such an amazing team.





Manomet Board of Trustees

- Dan Sarles (Chair)
- Nancy Dempze (Vice-Chair)
- Dave Bryan (Clerk)
- Michael Taubenberger (Treasurer)
- Molly Bartlett
- Louise Conant
- Molly Cornell
- Dwight DeMay
- Paul Dobbins
- Andy Falender
- Sarah Groves
- Alicemarie Hand
- Deb Harrison
- Sophie Hollingsworth
- Weston (Tony) Howland, III
- Rob Kluin
- Peter Marra
- Barbara McMillan
- Martha Piper
- Dean Steeger
- Rosa Maria Vidal

PHOTO CREDITS: Jon Albrecht, Clare Cunningham, Evan Dalton, Liana DiNunzio, Emily Farr, Pablo Gigi Gregoret, Alan Kneidel, Arne Lesterhuis, Nicolas Marchand, Mike Molnar, Jeanne O’Rourke, Julia Salazar, Shiloh Schulte, Abby Sterling, Brad Winn, Elijah Wojohn, John Woodruff, Maine Center for Coastal Fisheries/Tate Yoder, Jeisson Zamudio

Manomet Councilors

- Mack Barber
- Loring Conant, Jr., M.D.
- Glorianna Davenport
- Kathy Emrich
- Boynton Glidden, III
- Paul Hagen
- Stacia Hendricks
- Emily Nash Hunnewell
- Laura Johnson
- Allie Walker Loehlin
- Jim Loehlin, Ph.D.
- Sonia Loizeaux
- Gwyn Loud
- Jo-Ann Lovejoy
- Ginny Murray
- Josh Nickerson
- Stew Sanders
- John Sharp
- Millie Solomon
- Martha Stearns
- Jean-François Timmers
- Deborah Dantzler Williams

DESIGN: Cheri Natalino, CLN Design
EDITOR: Jeanne O’Rourke

It takes a flock to fill a field notebook! A heartfelt thank you to the entire Manomet Conservation Sciences team for lending their science, stories, and spirit to this year’s annual report. These *Field Notes* wouldn’t be complete without their dedication and passion for what they do here at Manomet.

Manomet Life Trustees

- Pete Bennett
- Dick Chute
- Gene Doggett
- John C. Fuller
- Anne & Walter Gamble
- Jane Hallowell*
- John C. Kricher, Ph.D.
- Doug Rhodes
- Peter M. Richards*
- Hanson C. Robbins
- Harry Sears, M.D.
- Nancy B. Soulette
- Emily “Paddy” V. Wade*

**Deceased*

Manomet Leadership

- Elizabeth Schueler
President
- Dr. Stephen Brown
Vice President, Science
- Dr. Rob Clay
Vice President, Flyways
- Dr. Molly Jacobs
Vice President for Environmental Education and Outreach
- Timothy Sharpe
Vice President, Philanthropy
- Brad Winn
Vice President, Resilient Habitats





manomet.org

P.O. Box 1770

Manomet, MA 02345

